

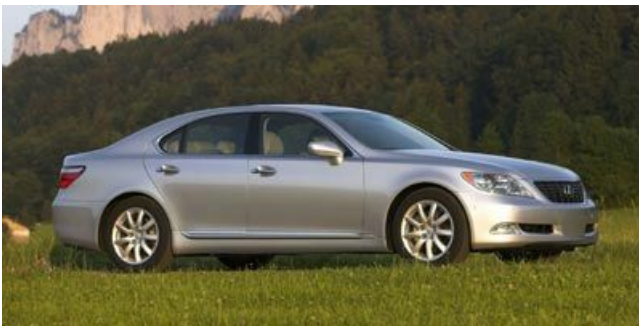


2008 Lexus LS 460 Email for price

Dealer Information

To get more details or set up a test drive this vehicle

Call us now:(281) 719-3756 20403 I-45 North Spring, Texas 77388



- Stock #:T1229A
- VIN:JTHBL46F085079928
- Mileage:135039
- Location:Spring, Texas 77388
- Body Style:Sedan
- Int.Color:Ivory
- Ext.Color:Starfire Pearl
- Transmission:Automatic
- Engine:4.6L DOHC 32-valve V8 inc: DI & SFI dual fuel injection, dual variable valve timing w/intelligence

#### Dealer Comments

JD Power gave this 2008 LS 460 a Power Circle Rating of 5 in Overall Performance and Design, Performance, and Comfort. Keep your allergies in-check with the cabin air filtration system. LED lights fail less often and keep the car looking good for years. Don't know how much pressure is in your tires? This vehicle does. Just check the handy tire pressure monitoring system. Why look any further?

#### Installed Features

- All-passenger automatic locking retractor (ALR)|All-position 3-point seat belts-inc: pretensioners
- force limiters|All-position emergency locking retractor (ELR)|Child Safety Locks|Collapsible steering column|Dual front 2-stage airbags w/occupant classification system|Emergency Trunk Release|First aid kit|Front pwr height-adjustable shoulder anchors|Front/rear crumple zones|Front/rear side curtain airbags|Impact-dissipating upper interior trim|Knee Air Bag|Side-impact door beams|1-piece chrome window surround|Acoustic glass windshield|Electrochromic pwr folding heated mirrors-inc: puddle lamps
- auto-tilt-down in reverse
- memory|Exterior glass w/UV reduction|Fog Lamps|LED lights-inc: brake lamps
- tail lamps
- license plate|Rain-sensing variable intermittent wipers w/mist cycle|Water-repellent windshield & front door glass|Xenon HID automatic headlamps-inc: adaptive front lighting system (AFS)
- auto-off delay|Auto-Dimming Rearview Mirror|Center console-inc: sliding armrest
- storage bin|Dual-zone automatic climate control system-inc: body heat sensor
- smog sensor
- auto recirculation
- clear air filter
- pollen filter|Front/rear dual illuminated vanity mirrors|Front/rear spot-lamp illumination|Illuminated remote releases-inc: trunk
- fuel filler door|Optitron electroluminescent instrumentation|Power Outlet|Rear Defrost|Rear seats-inc: (3) adjustable headrests|Tire Pressure Monitor|Trip Computer|Universal Garage Door Opener|Woodgrain Interior Trim|4-Wheel Disc Brakes|4.6L DOHC 32-valve V8 engine-

inc: DI & SFI dual fuel injection

- dual variable valve timing w/intelligence & electronically controlled intake (VVT-iE)|8-speed automatic transmission w/intelligence (ECT-i)-inc: gated shifter
- sequential sport-shift mode|Acoustic control induction system (ACIS)|Aluminum block & cylinder heads w/magnesium cylinder covers|Conventional Spare Tire|Electronic parking brake|Electronic throttle control system w/intelligence (ETCS-i)|Front/rear aluminum multi-link double joint suspension|Front/rear stabilizer bars|Liquid filled engine mounts|P235/50VR18 all-season tires|Power Steering|Tool kit

Sales Tax, License Fee, Registration Fee, Dealer Documentary Fee, Finance Charges, Emission Testing Fees and Compliance Fees are additional to the advertised price.